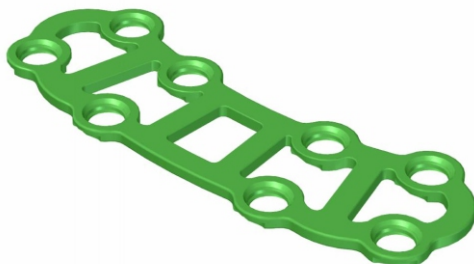


## LCP MANDIBLE STRUT PLATE, CURVED 8 HOLES, MALLEABLE



CAT NO	LCP MANDIBLE STRUT PLATE, CURVED 8 HOLES, MALLEABLE
708.108	LCP MANDIBLE Strut Plate, curved 8 holes, malleable Thickness 1.0 MM

### Specification

- Plate is available in Titanium.

.

### Indication for use

- The LCP Mandible Strut Plate with 8 holes, curved and malleable, is indicated for the internal fixation of mandibular angle fractures, particularly those involving the condylar region. Its three-dimensional, conical design provides enhanced resistance to lateral bending stresses and supports the condylar process fragments most efficiently.