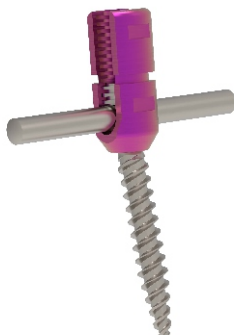


## POLYAXIAL REDUCTION SCREW (5.5MM ROD SYSTEM)



CAT. NO.	METAL	POLYAXIAL REDUCTION SCREW (6.0MM ROD SYSTEM)
645.630	TT	INNILOCK Polyaxial Reduction Screw Ø 6.5 mm x 30 mm
645.635	TT	INNILOCK Polyaxial Reduction Screw Ø 6.5 mm x 35 mm
645.640	TT	INNILOCK Polyaxial Reduction Screw Ø 6.5 mm x 40 mm
645.645	TT	INNILOCK Polyaxial Reduction Screw Ø 6.5 mm x 45 mm
645.650	TT	INNILOCK Polyaxial Reduction Screw Ø 6.5 mm x 50 mm
645.535	TT	INNILOCK Polyaxial Reduction Screw Ø 5.5 mm x 35 mm
645.540	TT	INNILOCK Polyaxial Reduction Screw Ø 5.5 mm x 40 mm
645.545	TT	INNILOCK Polyaxial Reduction Screw Ø 5.5 mm x 45 mm
645.550	TT	INNILOCK Polyaxial Reduction Screw Ø 5.5 mm x 50 mm

### Specification

- Available in Dia 5.5mm & 6.5mm with length 30,35,40,45 & 50mm.
- Available in Titanium material.

### Indication for use

- The system is indicated for use in the temporary stabilization or the anterior spine during the development of cervical spinal fusions in patients with degenerative disc disease, trauma (including fractures), tumors, deformity (defined as kyphosis, lordosis, or scoliosis), Pseudoarthrosis, and/or failed previous fusions.
- These devices are not approved for screw attachment to the posterior elements (pedicles) of the cervical, thoracic, or lumbar spine.