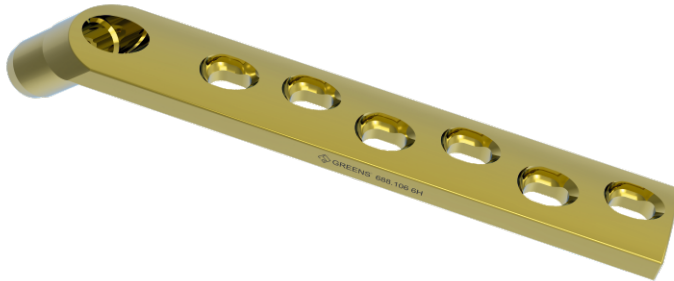


GREENS- DHS BARREL PLATE WITH DCP HOLE 135° SHORT DIA BARREL



CAT. NO. SS	GREENS - DHS BARREL PLATE WITH DCP HOLE 135° SHORT DIA BARREL
289.252	GREENS - DHS BARREL PLATE WITH DCP HOLE 135° SHORT DIA BARREL - 02 HOLES, L - 46MM
289.253	GREENS - DHS BARREL PLATE WITH DCP HOLE 135° SHORT DIA BARREL - 03 HOLES, L - 62MM
289.254	GREENS - DHS BARREL PLATE WITH DCP HOLE 135° SHORT DIA BARREL - 04 HOLES, L - 78MM
289.255	GREENS - DHS BARREL PLATE WITH DCP HOLE 135° SHORT DIA BARREL - 05 HOLES, L - 94MM
289.256	GREENS - DHS BARREL PLATE WITH DCP HOLE 135° SHORT DIA BARREL - 06 HOLES, L - 110MM
289.258	GREENS - DHS BARREL PLATE WITH DCP HOLE 135° SHORT DIA BARREL - 08 HOLES, L -142MM
289.259	GREENS - DHS BARREL PLATE WITH DCP HOLE 135° SHORT DIA BARREL - 09 HOLES, L -158MM
289.260	GREENS - DHS BARREL PLATE WITH DCP HOLE 135° SHORT DIA BARREL - 10 HOLES,L -174MM

Specification

- Plates available with 2,3,4,5,6,8,9 & 10 holes.
- Shaft of the plate mate with 4.5mm Cortical screw and barrel mate with 12.5mm

DHS/DCS Screws (with Compression Screws)

Indication for use

It is indicated to fix following fractures of the proximal femur-

- Intertrochanteric fractures
- Subtrochanteric fractures
- Basilar Neck fractures