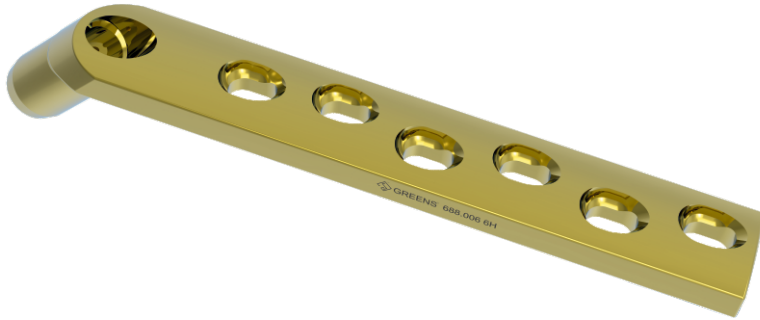


# GREENS- DHS BARREL PLATE WITH DCP HOLE 130° - SHORT DIA BARREL



CAT. NO. SS	GREENS - DHS BARREL PLATE WITH DCP HOLE 130° - SHORT DIA BARREL
289.153	GREENS - DHS BARREL PLATE WITH DCP HOLE 130° - SHORT DIA BARREL 03 HOLES, L - 62 MM
289.154	GREENS - DHS BARREL PLATE WITH DCP HOLE 130° SHORT DIA BARREL - 04 HOLES, L - 78 MM
289.155	GREENS - DHS BARREL PLATE WITH DCP HOLE 130° SHORT DIA BARREL - 05 HOLES, L - 94 MM
289.156	GREENS - DHS BARREL PLATE WITH DCP HOLE 130° SHORT DIA BARREL - 06 HOLES, L - 110 MM
289.158	GREENS - DHS BARREL PLATE WITH DCP HOLE 130° SHORT DIA BARREL - 08 HOLES, L - 142 MM
289.160	GREENS - DHS BARREL PLATE WITH DCP HOLE 130° SHORT DIA BARREL - 10 HOLES,
289.162	GREENS - DHS BARREL PLATE WITH DCP HOLE 130° SHORT DIA BARREL - 12 HOLES,

## Specification

- Plates available with 3,4,5,6,8,10 & 12 holes.
- Shaft of the plate mate with 4.5mm Cortical screw and barrel mate with 12.5mm DHS/DCS Screws (with Compression Screws)

## Indication for use

**It is indicated to fix-**

- fractures of the proximal femur
- trochanteric, pertrochanteric, intertrochanteric, and basilar neck fracture